

# Economic and Workforce Development Report: Central Vermont, VT



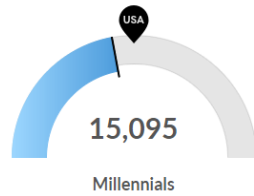
## Economy Overview

**87,714**  
Population (2021)  
Population grew by 370 over the last 5 years and is projected to grow by 1,740 over the next 5 years.

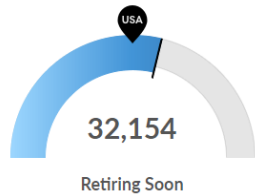
**46,988**  
Total Regional Employment  
Jobs decreased by 2,051 over the last 5 years but are projected to grow by 6 over the next 5 years.

**\$63.4K**  
Avg. Earnings Per Job (2021)  
Regional average earnings per job are \$13.2K below the national average earnings of \$76.6K per job.

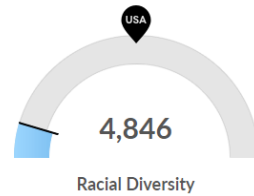
## Population Characteristics



Your area has 15,095 millennials (ages 25-39). The national average for an area this size is 17,962.

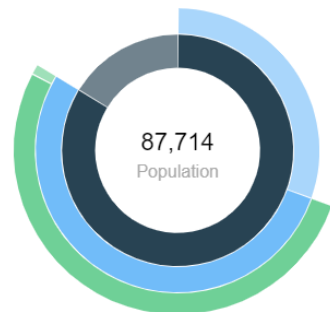


Retirement risk is high in your area. The national average for an area this size is 25,943 people 55 or older, while there are 32,154 here.



Racial diversity is low in your area. The national average for an area this size is 35,109 racially diverse people, while there are 4,846 here.

## Dec 2021 Labor Force Breakdown



	Population
16+ Civilian Non-Institutionalized Population	73,395
Not in Labor Force (16+)	26,662
Labor Force	46,733
Employed	45,816
Unemployed	917
Under 16, Military, and institutionalized Population	14,319

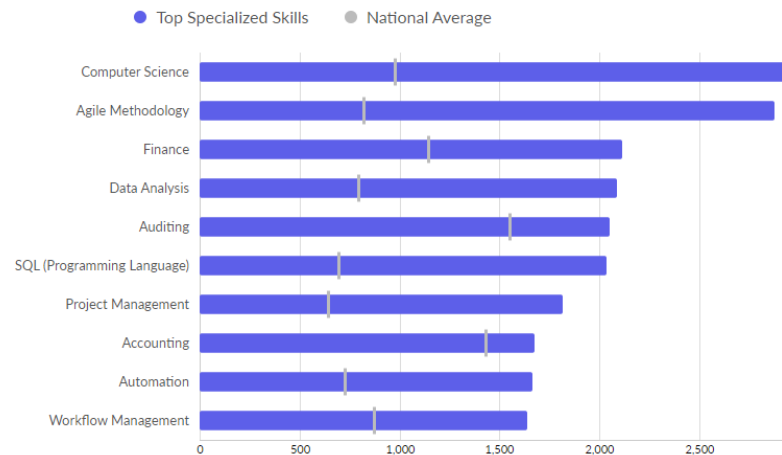
Source: EMSI, Economy Overview, 2022.

## Top Companies Hiring in Central Vermont, 2017-2022

Company	Total/Unique (Jan 2017 - Aug 2021)	Posting Intensity	Unique Postings Trend (Jan 2017 - Aug 2021)
Anthem Blue Cross	4,663 / 3,563	1:1	
State of Vermont	3,820 / 2,943	1:1	
US Bank	4,476 / 2,559	2:1	
Humana	3,258 / 1,669	2:1	
Randstad	1,409 / 903	2:1	
Pearson	734 / 611	1:1	
American Express	876 / 596	1:1	
Norwich University	1,281 / 582	2:1	
Travelers	700 / 555	1:1	
National Life	1,258 / 494	3:1	

Source: EMSI, Job Posting Analytics, 2022.

## Top In-Demand Skills in Central Vermont



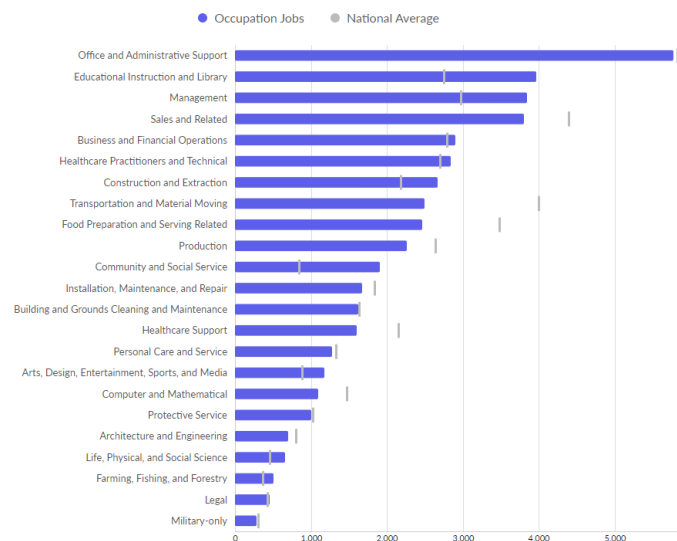
Source: EMSI, Economy Overview, 2022.



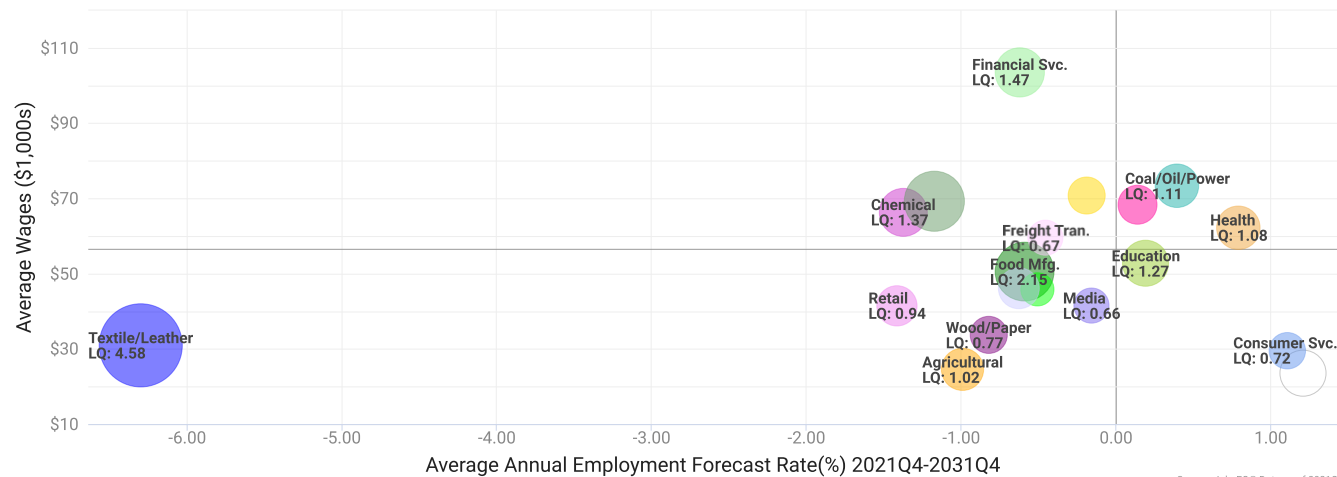
# Economic and Workforce Development Report: Central Vermont, VT



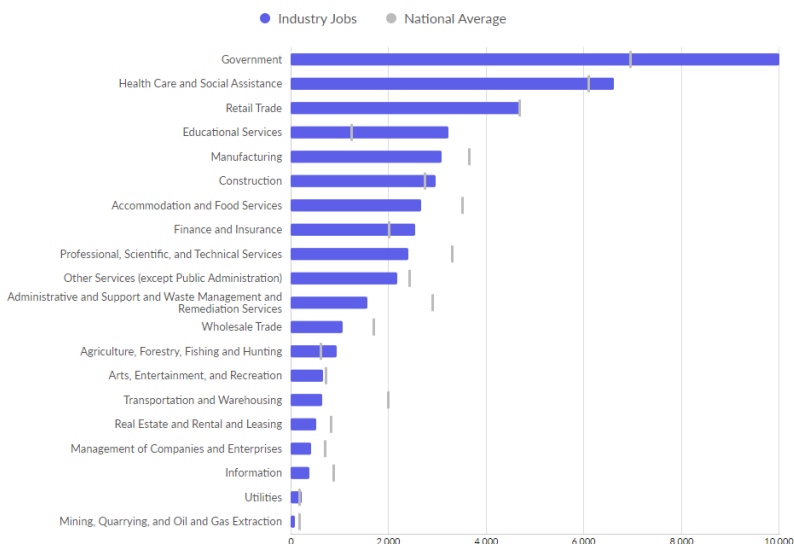
## Largest Occupations in Central Vermont



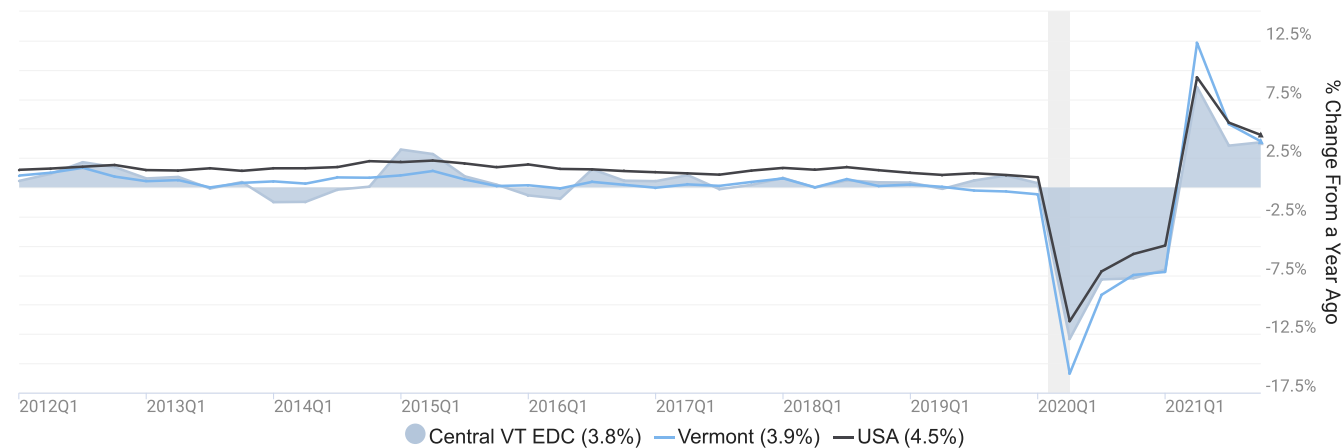
## Industry Clusters for Central VT EDC as of 2021Q4



## Largest Industries in Windham County



## Employment for Central VT EDC



Source: Chmura's JobsEQ, Industry Snapshot, 2022.

Source: EMSI, Economy Overview, 2022.